



## DIARY DATES

Date	Time	Event
Friday 8 <sup>th</sup> November		Non-uniform day for Glow Group
Monday 11 <sup>th</sup> November		Remembrance Day
		Visit from PSCO supporting Operation Sceptre
20 <sup>th</sup> November		Bright Sparks Trip
20 <sup>th</sup> November	From 6pm	Year 9 Parents Evening via Teams
22 <sup>nd</sup> & 28 <sup>th</sup> November		Nasal flu vaccinations. Please see below.
25 <sup>th</sup> November		INSET Day
3 <sup>rd</sup> December	3-4pm	Business & Enterprise Christmas Fair
5 <sup>th</sup> December		Romsey Abbey Concert
20 <sup>th</sup> December		Last day of Autumn Term

Dear parents and carers,

### Attendance Updates

I need to give parents some important updates about attendance. Firstly, I need to reiterate some key points on the importance of school attendance.

The law entitles every child of compulsory school age to an efficient, full-time education suitable to their age, aptitude, and any special educational needs they may have. It is the legal responsibility of every parent to make sure their child receives that education, either by attendance at a school or by education otherwise than at a school.

Where parents decide to have their child registered at school, they have an additional legal duty to ensure their child attends that school regularly. This means their child must attend every day that the school is open, except in a small number of allowable circumstances such as being too ill to attend or being given permission for an absence in advance from the school.

This is essential for students to get the most out of their school experience, including their attainment, wellbeing, and wider life chances. The students with the highest attainment at the end of Key Stage 2 and Key Stage 4 have higher rates of attendance over the key stage compared to those with the lowest attainment. At KS4, students not achieving grades 9 to 4 in English and maths had an overall absence rate of 8.8%, compared to 5.2% among those achieving grades 4 to 9. The overall absence rate of students not achieving grades 9 to 4 was over twice as high as those achieving grades 9 to 5 (8.8% compared to 3.7%).

For the most vulnerable students, regular attendance is also an important protective factor and the best opportunity for needs to be identified and support provided. Research has shown associations between regular absence from school and several extra-familial harms, including crime (the proportion of children that had been cautioned or sentenced for any offence that had ever been persistently absent was 81% and for serious violence offences was 85%).

In August this year, the government issued new guidance for schools: Working together to improve school attendance. The guidance introduced several changes, including:

- Emphasising the importance of families and schools working together to find supportive routes to improve attendance.
- Introducing new attendance codes and guidance on leaves of absence.
- Setting out a new National Framework for issuing penalty notices, which includes higher fines.

- Updating guidance for schools on students whose attendance is affected by physical or mental ill health and clarifying the medical evidence we are required to collect.

We have been working to take on board the new guidance and incorporate this into our attendance systems and processes. We will continue to do so and, at appropriate points, update and reissue our attendance policy. In this letter, I want to draw your attention to some key messages and changes.

Wyvern has in place a stage letter system (Stage 1, 2, 3) when we become concerned about a student's attendance. The emphasis is on alerting the parent to this concern, encouraging partnership working to improve attendance, and offering support. Prior to a Stage 1 letter, a "broken weeks" letter may be sent to some families if a student's absence is often a day or two across multiple weeks rather than in one block.

When a Stage 3 letter is sent, we place the student on our "unauthorised list," which means that any further absences are recorded as unauthorised unless specific medical evidence for that absence is given.

If at Stage 3 attendance does not improve, or support is not engaged with, the school is expected to begin considering pursuing attendance legal intervention in order to protect the student's right to an education. This can include formal support, attendance prosecution, or statutory children's social care involvement.

The school and the local authority work together to decide which approach from the range of legal interventions to use, including Attendance Contracts, Education Supervision Orders, Attendance Prosecution, Parenting Orders, or Penalty Notices.

Rather than turning straight to legal interventions, Wyvern will invite parents of students with poor attendance at Stage 3 into college for a Notice to Improve Attendance Planning Meeting, in which we will review the support put in place thus far and anything we can add to it to remove barriers to attendance. We will then move to considering attendance legal interventions if this support does not improve attendance or if it is not engaged with.






I also need to update parents on changes to penalty notices that have come into effect this year. The government threshold for which a school should consider issuing a penalty notice is 10 sessions of unauthorised absence (equivalent to 5 days) in a rolling period of 10 school weeks. The school will issue these regardless of the stage letter a particular student is currently on. The school can now issue two penalty notices in a 3-year rolling period. Fines have increased to £160 for the first penalty notice if paid within 28 days and reduced to £80 if paid within 21 days. A second penalty notice is charged at a flat rate of £160 if paid within 28 days.

In cases where two penalty notices have been issued and a third period of absence meets the national threshold, the school then needs to consider other attendance legal interventions, which could include prosecution. I share this because it is important that parents who make the decision to take a term-time holiday and pay the fine could be in this position if more than two are taken in any 3-year rolling period.

I hope that sharing all this information is useful for you as parents, and we thank you for your continued support.

William Emeny  
Deputy Headteacher

## COLLEGE CULTURE

HOUSE POINTS UPDATE – AS OF 07/11/24				
				
38883	39341	35658	38943	36025

## COMMUNITY NOTICES

**WOMENS' CRICKET:** New women's hardball cricket with Fair Oak Cricket Club starting on 9.11.24 @ Wyvern Sports Hall. [Click here for more details.](#)

### POPPY APPEAL

Royal Legion Poppys are now available from the college reception and the finance office.

- Cash donations only.
- Suggested donation of £1 for the pin badge.
- Any donation welcome for the paper poppy.



### DEVELOPING PLAY/SOCIAL AREAS IN BISHOPSTOKE

The Bishopstoke Parish Council to come in and chat to some of the students about the Play/Social Areas in the area - as they are looking to improve them. However, they want to find out what the young people in the area really want.

They have had some very successful visits to local schools and groups so far but would like to get as much input as possible from all different age groups.

If any students would like to contribute their thoughts, please contact Mrs Tyler in the Finance Office and she can tell you more about how to take part.

### CHRISTMAS MAKERS MARKET

The Dart Community Centre are hosting a Christmas Makers Market at Wildern Hall on the 1st December between 10:00am-17:00pm, this includes live music and festive refreshments. They will also have 21 different artists and makers selling a whole host of beautiful handmade items. [Click here for more information.](#)

## GENERAL COLLEGE NOTICES

**Charity Non-Uniform Day – Friday 8<sup>th</sup> November** - We would like to raise money for local charities which support families in need at Christmas. Students will therefore be able to wear non-uniform on Friday 8th November.

We ask parents to contribute to charity using either through Parentmail or cash on the day. We will distribute contributions to charities in our area: the local food bank; and a project within our own school for students whose parents we know will struggle to give presents to them this Christmas.

**Online Safety** – the latest edition of our Online Safety Newsletter is now on the website. [Click here for the page which has the new and previous editions.](#)

**Post 16 Transport** - Hampshire County Council has launched a consultation on its Post 16 Transport Policy. [Click here to find out more.](#)

**Patrol Crossing** – Allington Lane patrol crossing could be unavailable for up to two weeks starting 11/11/24.

**ASD – Parent Workshop - 21<sup>st</sup> November – Shepherds Down –** this free workshop is aimed at parents with children that have autism and are in mainstream schools. It will cover both primary and secondary phases. [For more information, click here.](#)

### **Hampshire Music – Pop Up Ensemble**

Following the success of the Pop-Up Orchestra events in March and July this year, HMS have arranged another one for Sunday 15<sup>th</sup> December. [Click here for the promotional flyer.](#) The event is for all instruments and all levels from beginner to Grade 4 and players do not need to be receiving lessons from Hampshire Music Service.

### **Managing Anxiety in Adolescents**

The Mental Health Support Team is offering a parent workshop to support parents in managing anxiety in adolescents. The workshop is on Zoom at 5pm on the 14<sup>th</sup> November and is free to attend. [All information and the link to join the session can be found by clicking here.](#) For more information on the MHST and what they do please use this link: [Parents & Carers – CAMHS](#)

## **CATERLINK SURVEY**



We are carrying out our annual student survey to assist us in improving our catering service to our customers and we would value the opportunity to survey the students at your school/college.



If your head of school/college would like your pupils to be part of this survey, we have provided the link below which can be shared with students, we have also provided as a QR code.

We will provide feedback to schools whose students complete the survey once results have been analysed. Many thanks in advance.

Go to <https://www.surveymonkey.com/r/S9CLJWM> or scan the QR code to the right.

We would ask that all responses are completed by 30<sup>th</sup> November.

## **LITERACY IN ACTION!**

### **Transition Curriculum English Lessons - Year 7**

Pupils from Year 7 Transition Curriculum started their new unit of work by taking part in a Sherlock Holmes Escape Room. Teachers were dressed as the famous sleuth duo: Holmes and Watson. They had clues to solve, codes to crack and prizes to be won before they were permitted to exit the E10 Escape Room! All groups were excellent at working collaboratively and using their critical thinking skills. They are now looking forward to learning more about writing in the 19<sup>th</sup> Century by Conan-Doyle and learning more about the Adventures of Sherlock Holmes.



### **Year 10 Reading Ambassadors**

We are delighted to announce that over 40 Year 10 pupils have successfully passed their Reading Ambassador training and are now ready to assist students in Year 7 and Year 8. All have been enthusiastic, engaged and keen to help younger pupils in the school progress in their learning. We look forward to a successful term ahead. A big thank you from us to all of the Year 10 volunteers.

## **NASAL FLU VACCINATION REMINDER**

Your child's annual Nasal Flu Vaccination is NOW DUE. The vaccine helps protect against flu, which can be a serious or life-threatening illness.

Click the link below for the electronic form and information about the vaccine. Access to the form will close two working days prior to the session.

- School Code: SH138184
- Session date: Friday 22nd and Thursday 28<sup>th</sup> November 2024
- Year Group: 7 – 11
- Link to website: [Nasal Flu Vaccination Programme : Hampshire Healthy Families](#)

If you decide you do not wish your child to receive the vaccine against flu, please submit the form to record your decision. This will enable us to update your child's immunisation record.

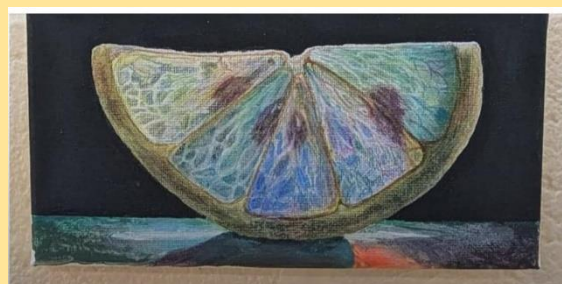


## ARTIST SUCCESS

Two of our students have enjoyed some well-deserved success in recent art competitions.

Rosenna in Year 9 drew some incredible portrait artwork at home and it was so good that her Art teacher Mr Price suggested she entered her work in competitions. Rosenna entered one of her portraits into The HobbyMaker Junior Crafter competition and won 1st place!

Emily – also in Year 9 won first prize for her superb picture “Lemon” in the Junior Art Exhibition at the Carrol Centre, Winchester.



Congratulations to them both and we hope they keep on developing their obvious talent.

## CAREERS NEWS

**Southampton Education Forum** is collaborating with Southampton Solent University, the University of Southampton, and Southampton City Council to host a free online event for parents and carers of young people (year 9 upwards) who are considering going to university (from Southampton, Portsmouth, Hampshire, the Isle of Wight, Dorset and beyond). The event will take place on Tuesday 26th November 2024 between 18:00-19:20.

This event is a great opportunity for parents and carers to learn more about the benefits of a university education, the application process, financial support options, and student support services typically available in universities. The event will include a Q&A panel where parents and carers can ask questions directly to expert careers professionals and colleagues from both Southampton Solent University and the University of Southampton.



**1CLICK TO ENLARGE**

**Green Careers Week** – click here for [some ideas from Unifrog for careers information linked to the week.](#)

During February Half Term on the Friday 21<sup>st</sup> February 2025, the *University Hospital Southampton* will be hosting their second ‘NHS Careers Insight Day’ for students in Year 10.

They are looking for enthusiastic young people interested in careers in the NHS to take part in our NHS careers day.

### NHS Careers Insight Day

This programme is open to **all students** aged studying/living in Hampshire, however there are places set aside for students **who meet 2** widening participation criteria. The criteria are:

- Parents, guardian or self in receipt of a means tested benefit
- Young people looked after by a Local Authority or you have been in care or looked after for three months or more.
- In receipt of 16-19 bursary or similar grant.
- Resident in an area with a postcode which falls within the lowest 20% of the IMD (Index of Multiple Deprivation), or a member of a travelling family.
- In receipt of free school meals at any time during (normally for a minimum period of at least one school term/2 months.)
- Participation in a recognised outreach or widening participation programme.

They only have **20 places** available for this day.

So if you would like to participate in NHS careers day please ask them to complete the form below by **midday on Friday 19th January 2025**.

Ensure you fill all sections in correctly as we will use the details you submit to contact you about any successful placement. I have also included a link to the application form - [NHS Careers Insight Day application form](#)

**PLEASE NOTE THIS DAY IS NOT FOCUSED ON CAREERS IN MEDICINE BUT THE FOCUS WILL BE ON ALLIED HEALTH CAREERS & HEALTHCARE SCIENCE CAREERS.**

## YEAR 7 NOTICES

### RPS Unit on Puberty

In the second half of the Autumn term year 7's will be undertaking a unit of work on puberty and body image as part of their Religious and Personal Studies (R.P.S.) lessons. [Please click here to read a letter from parents/carers from Mrs Adams](#), our RPS Curriculum Leader about the unit and how to get in contact, should you have concerns.

## YEAR 8 NOTICES

I hope that you all enjoyed a wonderful half term break – it has been lovely to welcome Year 8 back this week.

We have had a very small number of students who have shared their login details with others thus resulting in “others” allegedly sending communications as if they were the student logged in. I mentioned this in assembly, have asked tutors to go through the ICT Acceptable Use pages in the logbook and would also ask you please to remind your child about the implications of breaching an ICT acceptable use policy “in the real world”.

Mr Rule delivered Remembrance Assemblies this week which was an important moment to reflect upon conflicts of the past and those on-going in the world today. We hope that for any students involved in remembrance events this weekend that all goes well, and we are very proud of you.

I would like to congratulate P2 for earning the highest number of P1s in the last week of the previous half term (632) closely followed by G2 (629) and in third place H1 (624) – amazing efforts and so close. The leaderboard for student achievement points looks like this – in first place Lyra from D2 with 58 P1s, in second place Sophie from H1 with 52 and in third place Emily from D1 and Rowan from C2 with 48 points - well done to you all!

Mrs Howard  
Pastoral Lead Year 8

## YEAR 9 NOTICES

No notices this week

## YEAR 10 NOTICES

Year 10 Pastoral Team

## YEAR 11 NOTICES

Dear Year 11

Many of you have contacted us regards to when is the best time to apply for college.

So, I advise that once your personal statement has been signed off by your RPS Teacher then you can apply online. If you need support in applying to college then please speak to your RPS Teacher or myself, Mrs Gough, and we will help you.

The sooner that you apply for college the sooner you will be invited for an interview.

### **Please remember:**

- Peter Symonds application is for the 9th December 2024
- Barton Peveril is for the end of February 2025

Kind Regards  
Mrs Gough  
Careers Leader