

House Competitions Spring 2025

Tutors, please show the following competitions to you tutor group during the week beginning 13th January.

All competitions have been uploaded to Edulink.

Enjoy!



Algorithm Challenge

Introduction

An algorithm is a series of steps. The steps might repeat (a loop) or the steps might change depending on what happens (a decision). They may just follow each other in order (sequence).

Computers follow algorithms to carry out tasks.

You are not a computer. We want you to write an algorithm for something you enjoy! We want to see your talents!



A algorithm could be....

- A TikTok dance
 - A piece of music
 - A recipe
 - A tactic in a sport
- 

Your challenge

- Record yourself doing your chosen activity. You can do this as a video or a photo. You could also perform the dance live to your tutor!
- Produce an explanation of the steps. You can write these as bullet points, or you can write them as a flowchart, or you can explain them to your tutor who can award you house points.

Example

- Person One: Right hand, right hip. Left hand left hip. Place hands in cross over body. One point right, one point left, one point right, one shake left.
- Person Two: REPEAT
- Person One AND Two: REPEAT

Try the dance as a tutor group!

Inspirational Photography Competition

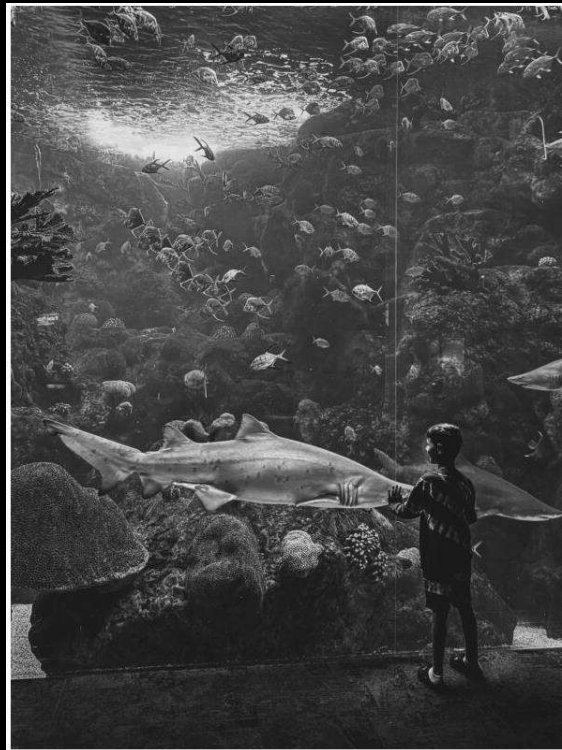
Take a photo, on any device, of something inspiring, something beautiful to you, or something that brings you joy.

Please send entries to
HouseLeader@wyvern.hants.sch.uk

Deadline: 28th February

Some inspiration for you:

- [Comedy Wildlife Photography Awards :: Comedy Wildlife Photography Awards - Conservation through Competition](#)
- [Sony World Photography Awards | World Photography Organisation](#)
- [2024 Winning Photographers – IPPAWARDS | iPhone Photography Awards](#)



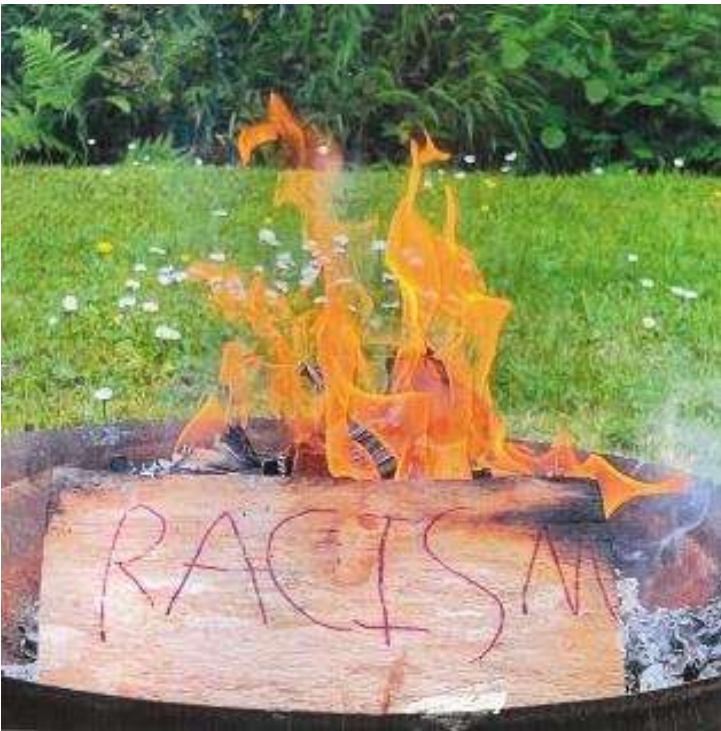
Design a New Chocolate Bar Wrapper

Design a new chocolate bar wrapper.

Before you start think about:

- Your new brand name
- The image you want your chocolate bar to have
- Who you're selling your chocolate bar to.
- Deadline: 31st January





Spirited Arts Competition

- Art
- Music
- Poetry
- Drama
- Photography
- Sculpture
- Dance

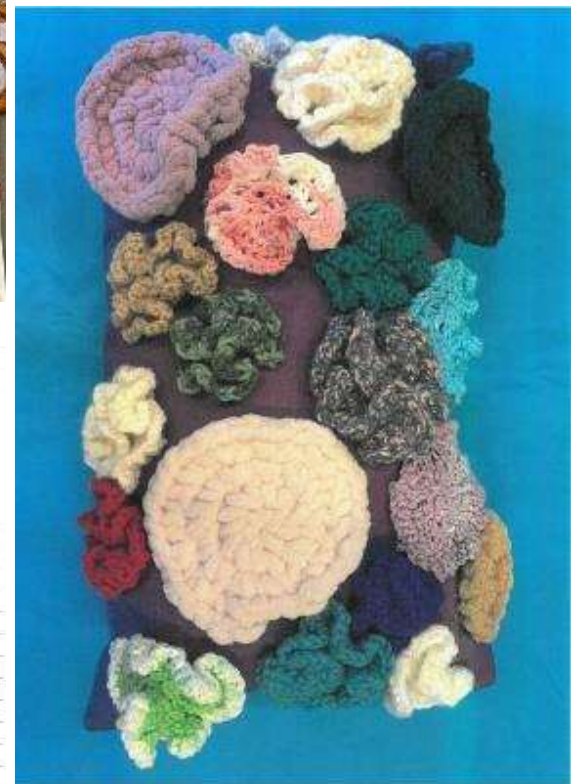
Spirited Arts Competition

Themes:

- Living in a diverse world
- Stories that change lives
- Thinking about God
- Sacred Spaces
- All God's Creatures?
- Making sense of life

Create your artwork and write a paragraph explaining how it links to the theme and why and how you created it.

Deadline: Friday 4th April, please submit your work to your RPS teacher or Ms Read/Mrs Wiseman



②
Sweet chains
held in heavenly - the air, the sun, the sea, the earth
We're all the same
For all the chains that hold us down
When lightness makes us men and
There is a place
In every person - there is a star
In every man, a creation force
In every part - a creation force
From heaven's land
Our love is strong
Someday stop our wandering souls
For our faith we will arise
Kindness not just as a word
To not see - but our human face
I chose the dove "faith in humanity" this poem is about how we can



Charity Fundraising Challenge

In school, or out of school, individually, or as a team. Which house can raise the most money for charity?

Need some ideas:

[Easy fundraising ideas | Teenage Cancer Trust](#)

[A-Z fundraising ideas | NSPCC](#)

[A-Z Fundraising Ideas | Save the Children UK](#)

Keep us updated on your progress:
houseleader@wyvern.hants.sch.uk

Deadline: 30th June.

History

'Eggstravaganza'

Can you create a historical figure from an egg?

Deadline: 21st March

*appropriate characters only – if you're unsure, check with your history teacher.

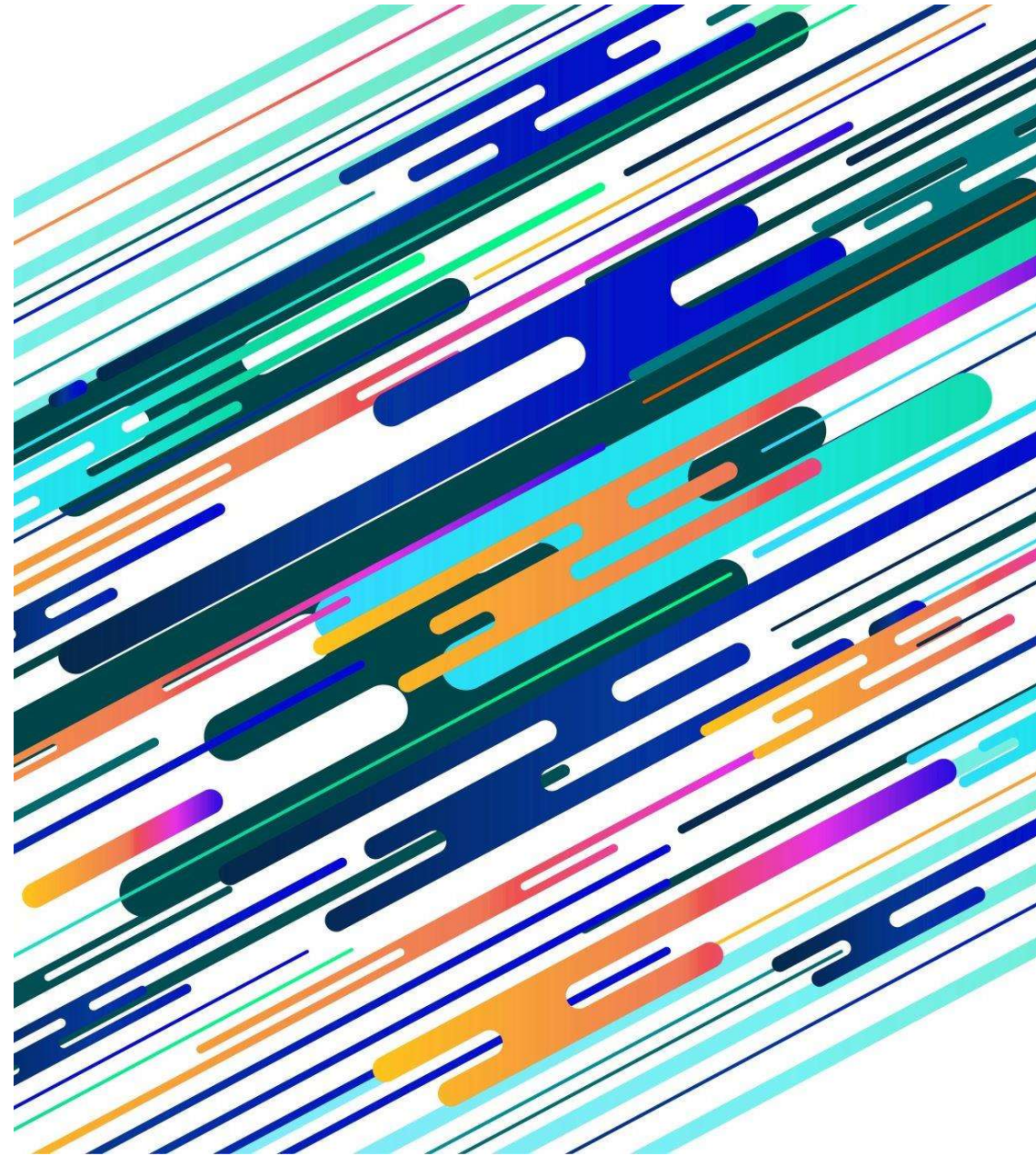


Eastleigh Basics Food Bank Donation Drive

Eastleigh Basics Bank was set-up by the churches of Eastleigh to support those who are experiencing financial difficulty and need short term support through the provision of food.

We are going to help the Eastleigh Basics Bank by bringing in items that they can use in their store to help the people who are in need that live in our community.

https://www.youtube.com/watch?v=_b2WptDI2NE



What can you bring in..

Our needs list is regularly reviewed to stay upto date

We really appreciate any donations, especially of the following items.

- **Tinned fish** - tuna, sardines, mackerel etc
- **Tinned meat meals** - curry, hot dogs, chilli con carne, ravioli, mince, stew, Fray Bentos pies etc
- **Corned beef**
- **Tinned ham**
- **Tinned potatoes**
- **Tinned vegetables**
- **Dried spaghetti**
- **Tinned spaghetti**
- **Kidney beans**
- **Soup**
- **Instant noodles & pasta**
- **Cook in sauces**
- **Long grain rice** - not the microwaveable type please
- **Tinned fruit** - peaches, fruit cocktail, pineapples etc
- **Desserts** - rice pudding, custard, jelly, Angel Delight, sponge puddings etc.
- **Jam, marmalade, peanut butter, honey etc**
- **Milk (long-life)**
- **Pasta**
- **Cereal**
- **Porridge** - traditional and instant
- **Biscuits**
- **Tea**
- **Coffee**
- **Hot Chocolate**
- **Soft drinks** - squash, long life juice, fizzy drinks etc.
- **Soap / handwash**
- **Shampoo**
- **Shower gel**
- **Toothpaste**
- **Toothbrushes**
- **Deodorant** - men's and women's
- **Tampons**
- **Nappies** - size 5 and upwards
- **Washing up liquid**
- **Toilet rolls**
- **Laundry tablets**
- **Dog food** - tinned and dried

When can you bring the items in....

- **Every Break 1 between 20th to 31st January 2025.**
- Go to the outside door of T2.
- Place your donation in the marked boxes.
- Write your name and your tutor group on the list clearly.
- Each donation will account for a P1.