



Thursday 14<sup>th</sup> November 2024

2024-2025 Issue NUMBER 10

## DIARY DATES

Date	Time	Event
20 <sup>th</sup> November		Bright Sparks Trip
20 <sup>th</sup> November	From 6pm	Year 9 Parents Evening via Teams
22 <sup>nd</sup> & 28 <sup>th</sup> November		Nasal flu vaccinations. Please see below.
25 <sup>th</sup> November		INSET Day
3 <sup>rd</sup> December	3-4pm	Business & Enterprise Christmas Fair
5 <sup>th</sup> December		Romsey Abbey Concert
17 <sup>th</sup> & 18 <sup>th</sup> December	7pm	Christmas Concerts
20 <sup>th</sup> December		Last day of Autumn Term



Dear parents,

It was a honour and a privilege to be at Sunday's remembrance service in the square at Fair Oak, with so many members of the local community. I was especially pleased to see so many students taking part, either as members of uniformed organisations, the church or playing the trumpet. As ever, we also observed two minutes of silence in college - on Monday to reflect on the lives and deaths of those who have served our country in the armed forces.

This week we have welcomed the police into college to talk to students about knife crime. It was an opportunity for students to ask questions about this topic directly to the police directly. In addition, students have had an assembly this on this topic, which answered the questions they generated for the assembly last week. I thought it would be useful to share with you the key messages we have given them:

### What the law says

It is against the law to carry a knife into a public place if the blade is more than three inches long or the knife locks into an open position. It is against the law to have types of blades which have been made to specifically harm and injure others e.g. machetes, zombie knives, daggers, flick knives and butterfly knives. It is against the law to have an offensive weapon. An offensive weapon can be:

1. Items that are made for the purpose of causing injury and have no other practical purpose in the normal world.
2. Items that are adapted or altered in some way for the purpose of causing injury. Examples are sharpened screwdrivers, smashing a bottle to make the broken end into a weapon for causing injury.
3. Items that are not specifically made or adapted to cause injury but are carried for that purpose. Examples of blades include sharp scissors, a razor but almost any item can be considered to be an offensive weapon if the person carrying the item intends to use it to cause injury.



Carrying an object with the intention to cause harm does include carrying it in self defence, with the intention to protect themselves if attacked.

#### Additional rules at Wyvern

Clearly any student breaking the law on knives and offensive weapons will be sanctioned proportionally and reported to the police.

However, we also have a ban on other, legal items.

It is not against the law to take a multi-tool device with a short blade on it into a public place or a pen knife into a public place as long as these blades are less than three inches long and do not lock into position. Such devices are used in crafts, outdoor education, certain sports like fishing and sailing, bushcraft and other activities. Clearly, if people carry these with the intention to cause harm or to threaten people then they become an offensive weapon which is against the law.

Under no circumstances should these items be brought into college. There will never be an activity at school which requires students to use these items for their intended purpose and therefore anyone who chooses to bring them in will have done so for a reason which is inappropriate.

#### Reasons and circumstances for carrying knives

We know that most people who do carry knives into a public place do so for aggressive or threatening reasons: to make other people afraid; to make people fear or respect them; to help them commit a crime like stealing from a shop, or from a person the street; because they have planned a fight and feel that a weapon will back them up; because they are drug dealing and want to be able to defend themselves and stop others stealing their drugs and money.

**However**, self-defence is the most common reason given by people who carry a knife. If they have been a victim of bullying, or street crime or generally fear for their own personal safety, they might consider ways to make themselves feel less vulnerable. But, self-defence or self-protection are not valid reasons for carrying a knife or offensive weapon, and this choice could have serious consequences for that person, including serious or fatal injury. 7 out of 10 people who end up in hospital with a knife injury were stabbed with their own knife.

#### How common is knife crime?

Every **nine** days a teenager in the UK is **stabbed**. But this happens far more in some parts of the UK than in others. Knives are the UK's **number one murder weapon**, but murder is still very rare. There is an increase in the number of people carrying knives but 96% of teenagers across the UK have never carried a knife. We know that knife crime happens more in some places than in others. It is most likely to happen in places where there are rival gangs who are in conflict with each other. It's more likely to happen where lots of people carry knives because this makes others fear they might get stabbed and so they carry one to defend themselves just in case. We also know that knives are more likely to be used in certain circumstances: when drugs are being sold; when shops are being robbed; when planned fights are due to take place; when groups of people confront or insult other groups of people; when people are drunk or under the influence of drugs; when people are out in the street late at night. By avoiding these times and situations, students make it very unlikely that they will be caught up in knife crime. By avoiding these behaviours and situations, they keep themselves safe. It is extremely rare that someone will just randomly attack a total stranger.

#### Reporting information you know about knives.

We have told the students that if they've heard or seen anything that makes them believe someone has a knife on them or is going to have one, then they need to report this. They can tell you, their parents and carers and I've sent you information on how to talk to your child about knives. They can tell any trusted adult at Wyvern. They can report it anonymously to the police using the crime stopper website. They don't have to leave their name or contact details. The police can stop and search anyone at any time where they have information that they might have a knife. It's everyone's responsibility to give the police the information they need to stop people carrying knives.

With best wishes  
Mr Rule

## FRIENDS OF WYVERN: UPDATE AND A HUGE THANK YOU!

### Celebrating Lauren and Amelia's Amazing Fundraising Efforts

This week, we want to give a special shout-out to Lauren H and Amelia S, whose incredible fundraising efforts over the weekend raised £50 for Friends of Wyvern. Despite the rainy weather, Lauren and Amelia created handmade bracelets, keychains, and goody bags with handwritten thank-you notes, selling them at the end of their road. Their creativity, dedication, and hard work are truly inspiring, and we are so proud of their contribution to fundraising projects.

Both girls have been awarded a P2 (10 house points), and we have sent a postcard home to thank them for their efforts. Thank you, Lauren and Amelia—you've made a big difference to our school community!



### Our Current Fundraising Goals

Friends of Wyvern is currently raising funds for:

- New outdoor seating and canopies to make social spaces more comfortable.
- New food technology equipment to support practical lessons.
- New class sets of laptops to enhance learning across all subjects.

We rely on the generous support of parents, carers, and the wider community to make these goals a reality.

### Support Friends of Wyvern

The easiest way to support us is to make a one-off or regular donation. Here's how:

Step 1: Set up a one-off or regular payment in your mobile banking app:

- Account Name: Friends of Wyvern
- Account Number: 36257262
- Sort Code: 30-99-50
- Bank: Lloyds
- Reference: [Your Family Surname]
- Frequency: Weekly, monthly, quarterly, or yearly

Step 2: Add Gift Aid!

If you pay UK tax, you can boost your donation by 25% at no extra cost. Simply complete this short online Gift Aid form: [Gift Aid Form](#)



### Stay Connected

Follow us on Facebook (search *Friends of Wyvern*) for updates, events, and success stories, and visit our charity website at [www.friendsofwyvern.org.uk](http://www.friendsofwyvern.org.uk).

Thank you for your ongoing support—it makes a world of difference to our students and school community!

**HOUSEPOINTS  
UPDATE  
14<sup>th</sup> November 2024**





## COMMUNITY NOTICES

**WILLOW STAR WORKSHOP** – November 26<sup>th</sup> at the Parish Office, Horton Heath. Why not enjoy an evening at Fair Oak & Horton Heath Parish Offices for a willow star workshop – [click here for a poster for details and how to register.](#)

## CHRISTMAS MAKERS MARKET

The Dart Community Centre are hosting a Christmas Makers Market at Wildern Hall on the 1st December between 10:00am-17:00pm, this includes live music and festive refreshments. They will also have 21 different artists and makers selling a whole host of beautiful handmade items. [Click here for more information.](#)

## NASAL FLU VACCINATION REMINDER

Your child's annual Nasal Flu Vaccination is NOW DUE. The vaccine helps protect against flu, which can be a serious or life-threatening illness.

Click the link below for the electronic form and information about the vaccine. Access to the form will close two working days prior to the session.

- School Code: SH138184
- Session date: Friday 22<sup>nd</sup> and Thursday 28<sup>th</sup> November 2024
- Year Group: 7 – 11
- Link to website: [Nasal Flu Vaccination Programme : Hampshire Healthy Families](#)

If you decide you do not wish your child to receive the vaccine against flu, please submit the form to record your decision. This will enable us to update your child's immunisation record. **ALL FORMS NEED TO BE REGISTERED BY NOVEMBER 20<sup>TH</sup>.**

## GENERAL COLLEGE NOTICES

### Developing Play Areas in Bishopstoke

The Bishopstoke Parish Council to come in and chat to some of the students about the Play/Social Areas in the area - as they are looking to improve them. However, they want to find out what the young people in the area really want.

They have had some very successful visits to local schools and groups so far but would like to get as much input as possible from all different age groups.

If any students would like to contribute their thoughts, please contact Mrs Tyler in the Finance Office and she can tell you more about how to take part.

**Online Safety** – the latest edition of our Online Safety Newsletter is now on the website. [Click here for the page which has the new and previous editions.](#)

### Lost Property

There is a large amount of lost property building up within the college – particularly PE kit and coats. If your child has lost something, please encourage them to visit Reception or the Finance Office where we will do our best to reunite them with their lost items.

And despite the fact that your children are in most cases young teenagers it is really important that all items are named. If they do happen to leave anything in a classroom / changing room it can be quickly given back to them if it has their name in otherwise it will be another black coat, another pair of black trainers, another black PE bag.

## Bought Items for Collection

If you have made a purchase through ParentMail (for example revision guides, stationery items) these items are available for collection from the Finance Office.

Please let your child know if you place any orders on their behalf.

**Post 16 Transport** - Hampshire County Council has launched a consultation on its Post 16 Transport Policy. [Click here to find out more.](#)

## Hampshire Music – Pop Up Ensemble

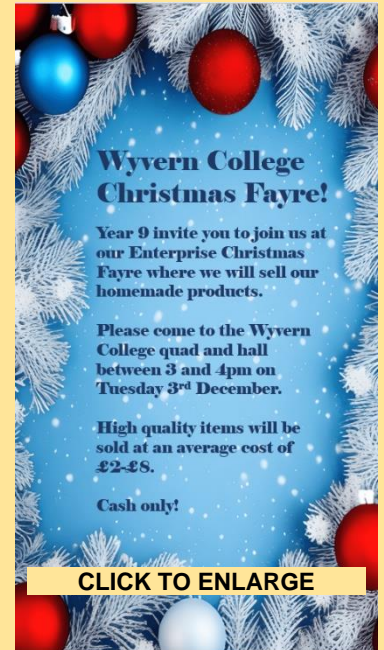
Following the success of the Pop-Up Orchestra events in March and July this year, HMS have arranged another one for Sunday 15th December. [Click here for the promotional flyer.](#) The event is for all instruments and all levels from beginner to Grade 4 and players do not need to be receiving lessons from Hampshire Music Service.

## Managing Anxiety in Adolescents

The Mental Health Support Team is offering a parent workshop to support parents in managing anxiety in adolescents. The workshop is on Zoom at 5pm on the 14<sup>th</sup> November and is free to attend. [All information and the link to join the session can be found by clicking here.](#) For more information on the MHST and what they do please use this link: [Parents & Carers – CAMHS](#)

**Enterprise and Business Christmas Fayre** – 3-4.30pm on Tuesday 3<sup>rd</sup> December – [click here or on the image \(right\) for more details.](#)

**Hampshire Teen Project** are holding a Christmas event on the 23<sup>rd</sup> December – this is for benefits related free school meal students. [Click here for more details](#) and [here for details of the pickup and drop off scheme.](#)



## CATERLINK SURVEY



We are carrying out our annual student survey to assist us in improving our catering service to our customers and we would value the opportunity to survey the students at your school/college.

If your head of school/college would like your pupils to be part of this survey, we have provided the link below which can be shared with students, we have also provided as a QR code.



We will provide feedback to schools whose students complete the survey once results have been analysed. Many thanks in advance.

Go to <https://www.surveymonkey.com/r/S9CLJWM> or scan the QR code to the right.

We would ask that all responses are completed by 30th November.

## CAREERS NEWS

During February Half Term on the Friday 21<sup>st</sup> February 2025, the *University Hospital Southampton* will be hosting their second 'NHS Careers Insight Day' for students in Year 10.

They are looking for enthusiastic young people interested in careers in the NHS to take part in our NHS careers day.

## NHS Careers Insight Day

This programme is open to **all students** aged studying/living in Hampshire, however there are places set aside for students **who meet 2** widening participation criteria. The criteria are:

- Parents, guardian or self in receipt of a means tested benefit

- Young people looked after by a Local Authority or you have been in care or looked after for three months or more.
- In receipt of 16-19 bursary or similar grant.
- Resident in an area with a postcode which falls within the lowest 20% of the IMD (Index of Multiple Deprivation), or a member of a travelling family.
- In receipt of free school meals at any time during (normally for a minimum period of at least one school term/2 months.)
- Participation in a recognised outreach or widening participation programme.

They only have **20 places** available for this day.

So if you would like to participate in NHS careers day please ask them to complete the form below by **midday on Friday 19th January 2025**.

Ensure you fill all sections in correctly as we will use the details you submit to contact you about any successful placement. I have also included a link to the application form - [NHS Careers Insight Day application form](#)

**Southampton Education Forum** is collaborating with Southampton Solent University, the University of Southampton, and Southampton City Council to host a free online event for parents and carers of young people (year 9 upwards) who are considering going to university (from Southampton, Portsmouth, Hampshire, the Isle of Wight, Dorset and beyond). The event will take place on Tuesday 26th November 2024 between 18:00-19:20.

This event is a great opportunity for parents and carers to learn more about the benefits of a university education, the application process, financial support options, and student support services typically available in universities. The event will include a Q&A panel where parents and carers can ask questions directly to expert careers professionals and colleagues from both Southampton Solent University and the University of Southampton.

**PARENTS & CARERS HIGHER EDUCATION INFORMATION EVENT**  
26TH NOVEMBER 2024, 18:00-19:20 - ONLINE

Are you a parent or carer whose young person is considering going to university? Join us to learn about:

- The benefits of university
- The support available at university
- The cost of university
- The application process

This free event also includes a Q&A panel featuring education professionals from across the Southampton Education Forum Network

**REGISTER ONLINE HERE:** <https://gck.fm/inqrn>

**1CLICK TO ENLARGE**

## YEAR 7 NOTICES

In a blink on an eye the first half term and holiday is over and what a first half term it has been.

I am so immensely proud of just how well Year 7 have emersed themselves into life at Wyvern College. During the last week before the break, I spent a whole day with the year group - popping in and out of as many lessons as I could, wandering the site during breaks and spending time with as many children as I could. I was blown away by the exemplary behaviour both in lessons and around the school buildings. I was delighted to see how engaged and focused the pupils were in lessons and that the work being produced was of a very good standard.

It was really lovely that pupils were keen to share with me what they had been working on and were eager to show me their work. I was also very privileged to be able to hear the year group sing with such enthusiasm during an assembly and to witness real examples of sporting talent during PE lessons. It really was an uplifting and special day and one which made me very proud of each and every pupil - they are a real credit to yourselves and asset to the year group.

I would like to praise the following three pupils for their efforts last half term as they are currently holding the top three spots for highest number of achievement points. Well done and keep up the good work to Jemima (7C1), Niamh (7P2) and Mouadh (7D2).

Mrs Taylor-Watson  
Pastoral Leader Year 7

## YEAR 8 NOTICES

Here we are at the end of our second week back already. Wyvern students have had House Assemblies this week which have been great fun. Do ask them what they did – I am not sure the projector has survived Thursday's assembly!

Just a note about logbooks that I would really appreciate your support with. Wyvern provides a logbook to every student in the college at the start of the year and it is their responsibility to look after it and remember to bring it to college every day. We cannot afford to buy an infinite number of logbooks as they're costly to produce and we don't want to waste money ordering far more than are needed. There have been an increasing number of Y8s coming to my office asking to buy a new logbook. Most of the time the logbook is found at home in a teenage bedroom, lurking underneath a pile of clothes strewn across the floor (well in my house that is the case, but I am not meaning to judge any of you by my own terrible standards). Sometimes it has been left in a classroom so I will always ask that tutors email class teachers to check their desks and that students have a really good look at home before I permit buying a new one. When a new one is purchased, one of the permission pages to leave a lesson will be removed. Repeatedly losing a logbook will result in sanctions.

OK so onto happier things. Y8 will have their Christmas celebration assembly in a few weeks so if any parent is willing and able to make a donation to this event, we would really appreciate it. I understand it is a very expensive time of year so anything would be gratefully received whether a voucher, a chocolate gift or indeed something that you know your child would enjoy. Please just ask students to bring donations to the year office.

Congratulations to H1 again for earning the highest number of P1s last week (513) closely followed by H2 (502) and in third place P2 (500). The leaderboard for students last week is as follows Seren H1 in first place with 42 P1s, Steph from G1 with 36 and in JOINT third place Jack from P2 and Evelyn from G2 with 35 points each - well done to you all!

Mrs Howard  
Pastoral Lead Year 8

## YEAR 9 NOTICES

**Parents Evening 20<sup>th</sup> November 2024** – please note that booking for Open Evening is open and will close on 19<sup>th</sup> November 23.55 pm. Please refer to the email sent to parents/carers with how to book your slots.

Last Thursday we held the first celebration breakfasts of the school year, to recognise those students who have achieved outstanding PRIDE scores. These events are to praise those students who consistently show all of the elements of our PRIDE ethos in lessons, at extra-curricular clubs/events and in their home-learning. It is great chance to catch up with those students and give them the opportunity to be recognised for their good work. We held two events at Thursday registration in the Hall and in T6, where students met, sat and chatted and thanked publicly by staff running the events, as well as being served breakfast.

The Year 9 students who attended all had very similar stories to tell about the recipe for their success; what they did to achieve their super PRIDE scores.

- Don't be afraid to get things wrong (try hard but accept that you'll make mistakes).
- Get involved in activities outside lessons (sport, DofE, music, drama, or anything else you can).
- Be organised when it comes to doing homework (create a weekly schedule).
- Listen and focus in lessons.
- Don't just follow your friends (be true to yourself).

These are wise words from some amazing Year 9 students, and well worth sharing with everyone.

Mr Street  
Pastoral Lead Year 9

## **YEAR 10 NOTICES**

### **NO NOTICES THIS WEEK**

Year 10 Pastoral Team

## **YEAR 11 NOTICES**

Dear Year 11

Many of you have contacted us regards to when is the best time to apply for college.

So, I advise that once your personal statement has been signed off by your RPS Teacher then you can apply online. If you need support in applying to college then please speak to your RPS Teacher or myself, Mrs Gough, and we will help you.

The sooner that you apply for college the sooner you will be invited for an interview.

### **Please remember:**

- Peter Symonds application is for the 9th December 2024
- Barton Peveril is for the end of February 2025

Kind Regards  
Mrs Gough  
Careers Leader